

Survey Findings

Edna Kamis-Gould, Ph.D. and Fred Snyder, MA



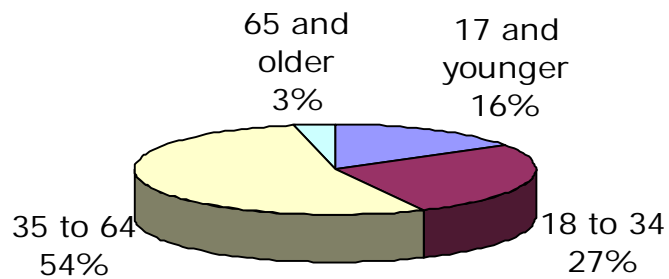
- The Respondents
- System-wide measures
- Adult mental health (AMH) measures
- Statistics
- Observations

Comparison of Survey Respondents and Consumers in Service

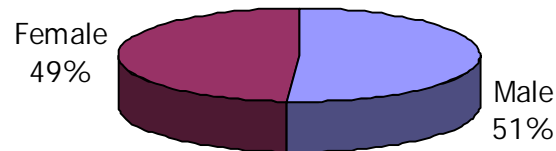
Disability Group	Active in Service	Survey Respondent	Percent in Service
AMH	64,385	4,624	7.2%
C&A	24,220	1,463	6.0%
MR	12,667	2,210	17.4%
SA	21,971	2,029	9.2%
Missing		518	
TOTAL	123,243	10,844	8.8%

Respondents Characteristics

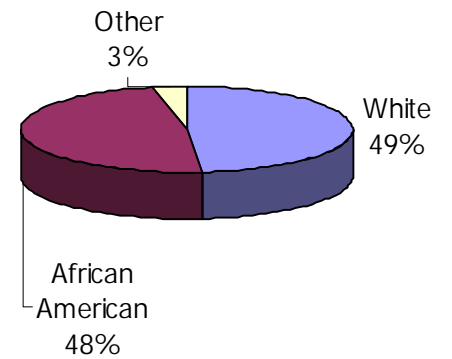
Age Groups



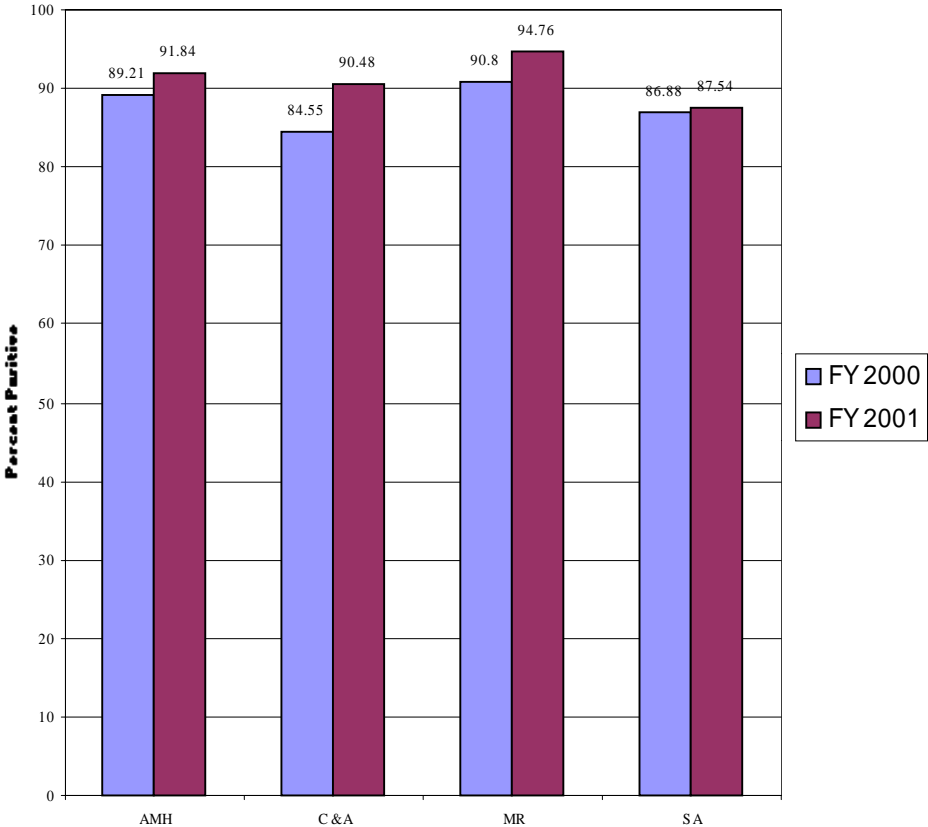
Gender



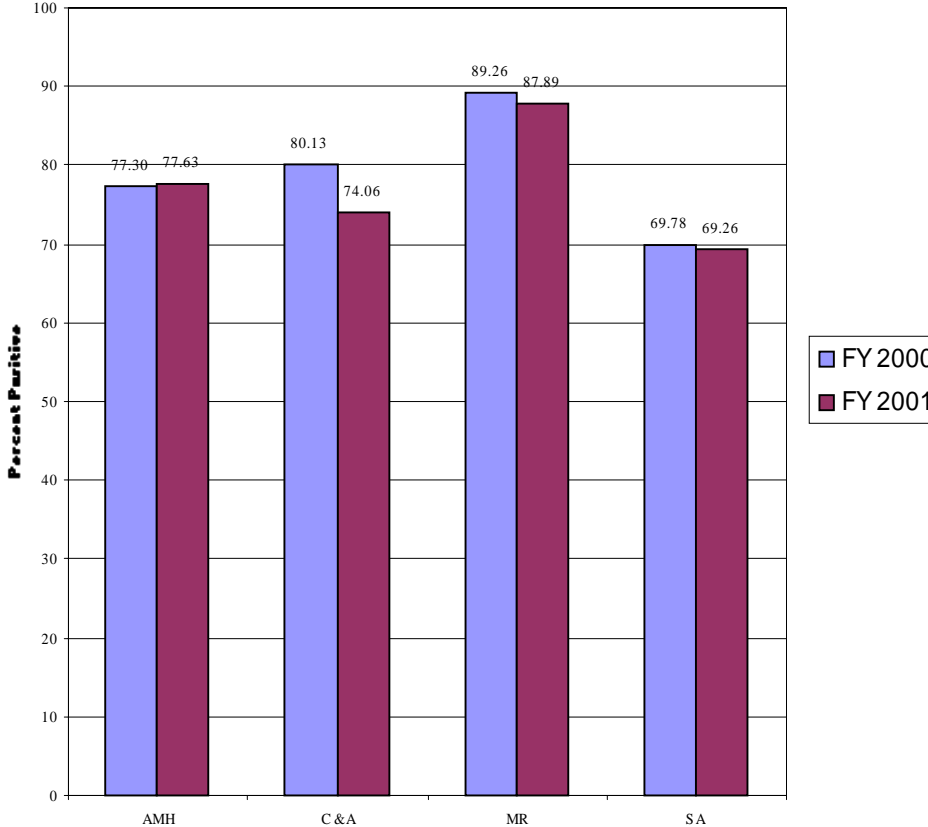
Racial Composition



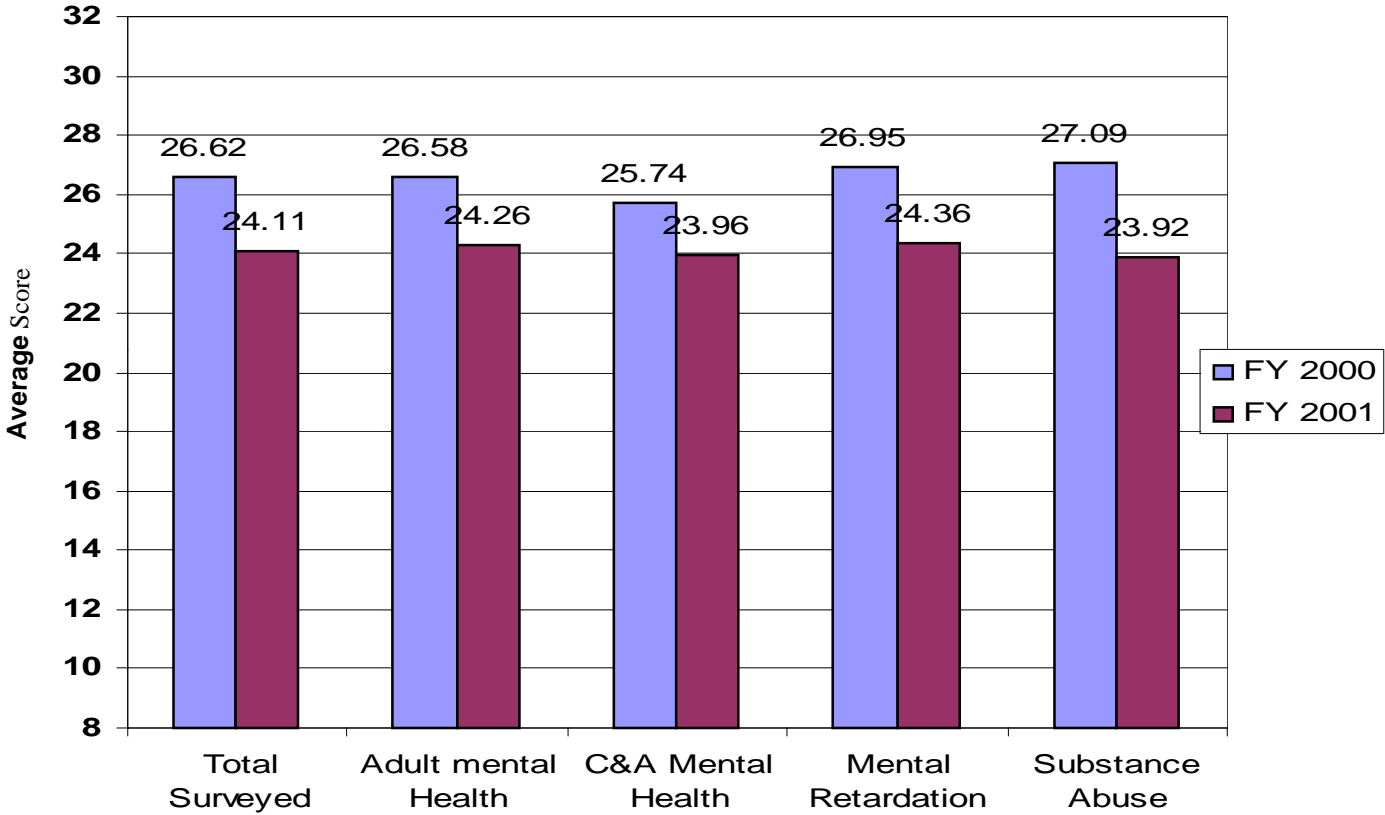
Consumer Perception of Accessibility FY 2000 & FY 2001



Consumer Perception of Availability FY 2000 & FY 2001

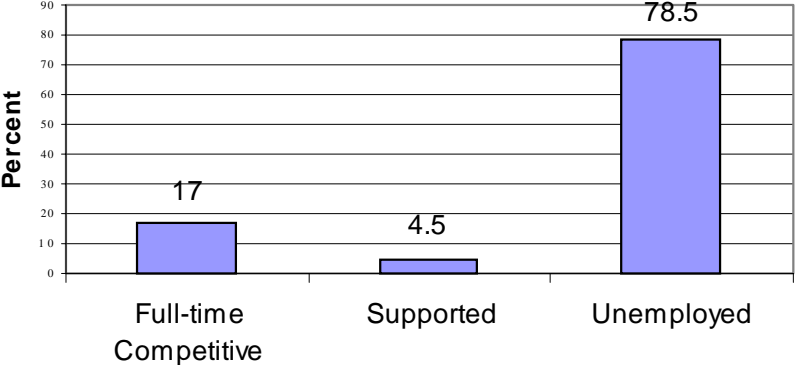


Reported Satisfaction with Services Using CSQ-8 Questionnaire

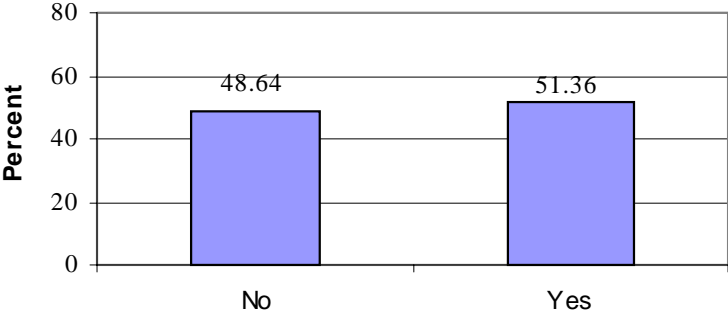


Adult Mental Health Employment

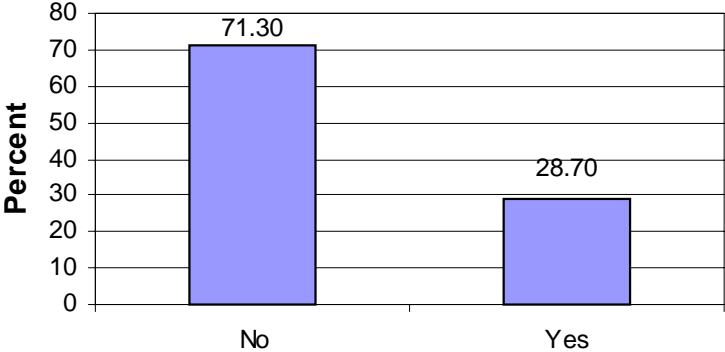
Are you Employed?



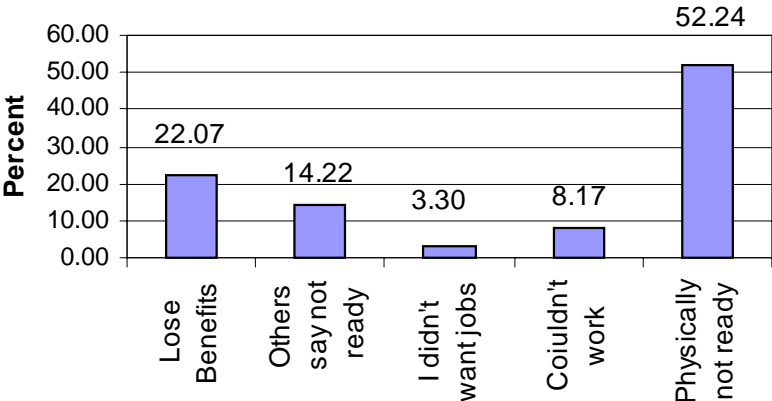
If not employed, do you want to get a job?



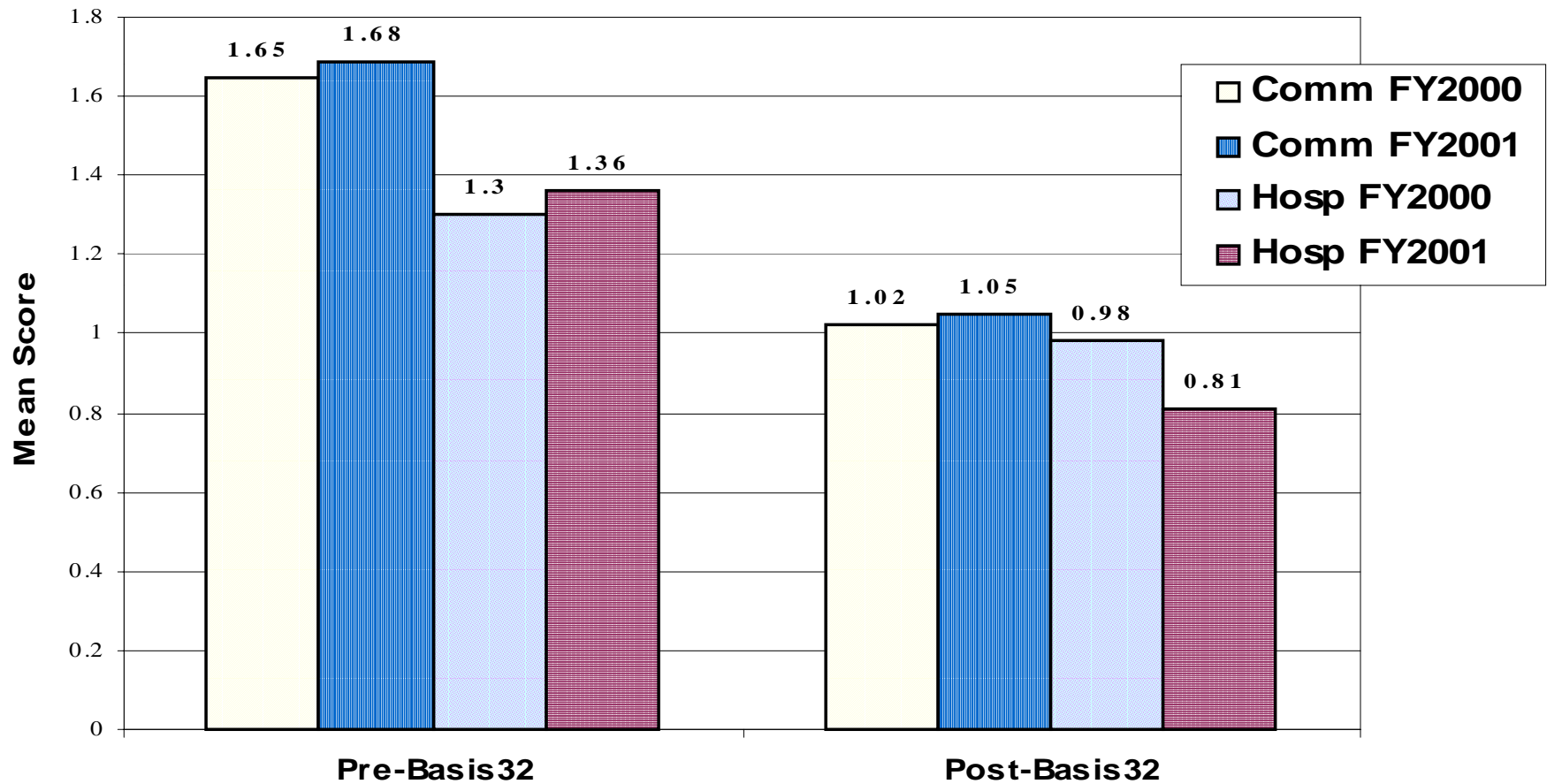
Job Training for Unemployed



Do not want to work



Comparisons of Basis 32 Scores Pre and Post Test, Community and Hospital, FY2000 and FY2001



AMH Factor Analysis

<u>Factor</u>	<u>Sample Variables</u>	<u>Loading</u>	<u>Percentage of Variance</u>
General Satisfaction			18%
	Staff Listen	.73	
	Get Along With CM	.68	
	Accessibility	.54 - .67	
	CSQ8	.60 - .68	
Dissatisfaction			14%
	Negative CSQ8	.30 - .40	
Perceived Barriers			10%
	Transportation	-.46	
	Easy To Get To	-.47	
	Convenient Time	-.40	
Medical/Dental			6%
	Medical Care	.50	
	Dental Care	.62	
Living Arrangement			6%
	Choice	.45	
	Location	.54	

Regression Analysis



- ❑ Highly significant (large N), but very low R²
- ❑ High Satisfaction
 - ❑ Older > younger
 - ❑ Women > men
 - ❑ Good health > poor health
 - ❑ Not wanting job > wanting job
 - ❑ Getting job training > not getting job training
 - ❑ Recipients of support services, counseling and training/education

Observations



- Adequate sample, but issue of sampling method
- System interventions produce system results; accessibility vs. Availability
- Complexity of employment
- Clinical Assessment; hospital-community differences and general improvement
- The results make sense