

Sixteen State Pilot Study
State Mental Health Agency Performance Measures
Indicator A1

Penetration/Utilization Rates

Definitions

Utilization Rates

State-by-State Specifications

Data Provided by Participating States

Data Compiled by:

John A. Pandiani, Ph.D.

802-241-2638 jpandiani@ddmhs.state.vt.us

and

Janet A. Bramley, Ph.D.

802-241-2659 jbramley@ddmhs.state.vt.us

Vermont Department of Developmental and Mental Health Services
103 South Main Street, Waterbury, VT 05443

Indicator A1

Penetration/Utilization Rates

Definitions

A. Community Programs:

Unless otherwise specified, computations are based on unduplicated counts of all individuals served by community mental health programs that are operated or funded by the state mental health authority. All individuals served by these programs, regardless of insurance coverage or legal status, should be included in these counts. Inpatient mental health programs should be excluded from these counts.

B. State Hospitals:

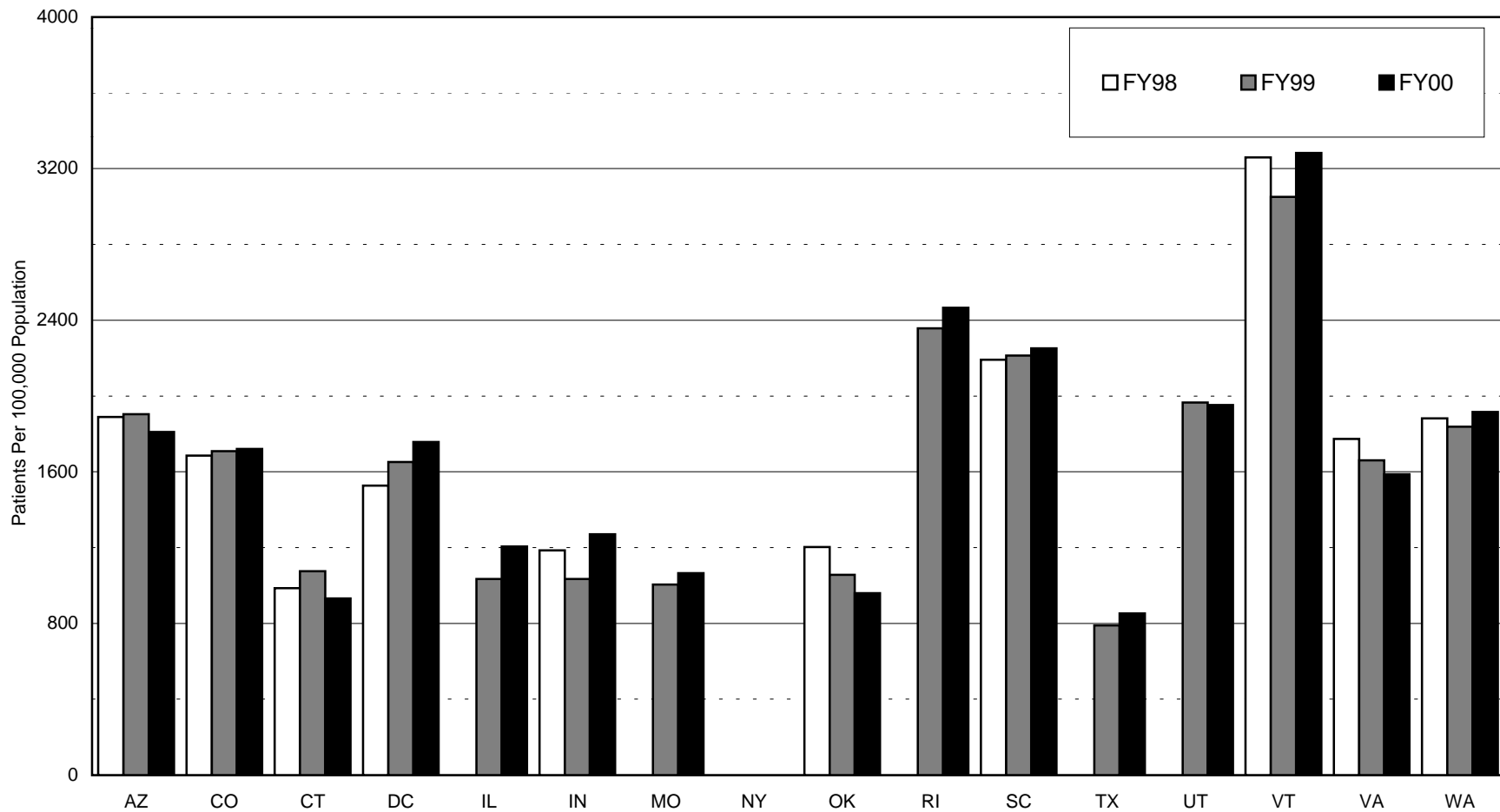
Unless otherwise specified, computations of State Hospital penetration/utilization rates are based on unduplicated counts of people served by state hospitals in each state. All individuals who spent time in a State Hospital, regardless of legal status or diagnosis should be included. Counts should exclude non-State Hospital based inpatient programs and psychiatric hospitals operated by other branches of state government (e.g. correctional authorities).

C. Computation:

Utilization rates (per 100,000 population) are derived by multiplying the number of people served by 100,000 and dividing that number by the total number of residents of the state. Utilization rates are presented for the state as a whole, and for broad age (less than 18, 18 and over), gender (male, female), and race (white, non-white) categories. In each case, the number of people in the specified category who were served is compared to the total number of state residents in the specified category to obtain the utilization rate. More detailed breakdowns for age and race categories are planned for the future.

Where data regarding age, gender, or race are missing, utilization rates have been statistically adjusted so as not to report artificially deflated utilization rates. This statistical adjustment involves assigning individuals to age, gender, or race categories in proportion to the representation of these groups in the reported patient/client population.

Penetration/Utilization Rates Community-Based Programs: FY 1998, FY 1999, FY 2000



**PENETRATION/UTILIZATION RATES
COMMUNITY-BASED PROGRAMS
Rate Per 100,000 Population: FY1998**

	Total	Age		Gender		Race	
		Under 18	Over 18	Male	Female	White	Nonwhite
Overall							
Median	1,729	1,926	1,707	1,717	1,736	1,363	2,941
Minimum	986	887	1,238	985	987	483	1,556
Maximum	3,259	5,480	2,543	3,143	3,371	3,213	6,250
State							
Arizona	1,889	1,961	1,862	2,077	1,705	1,413	5,656
Colorado	1,685	1,926	1,599	1,562	1,806	1,312	6,250
Connecticut	986	-	1,300	985	987	751	2,750
DC	1,527	956	1,670	1,660	1,409	483	2,062
Illinois	-	-	-	-	-	-	-
Indiana	1,186	1,035	1,238	1,260	1,115	994	3,032
Missouri	-	-	-	-	-	-	-
New York	-	-	-	-	-	-	-
Oklahoma	1,202	887	1,316	1,150	1,252	1,130	1,556
Rhode Island	-	-	-	-	-	-	-
South Carolina	2,192	2,915	1,947	2,125	2,253	1,894	2,851
Texas	-	-	-	-	-	-	-
Utah	-	-	-	-	-	-	-
Vermont	3,259	5,480	2,543	3,143	3,371	3,213	6,099
Virginia	1,773	1,498	1,861	1,780	1,766	1,543	2,511
Washington	1,882	2,272	1,745	1,774	1,987	1,689	3,461

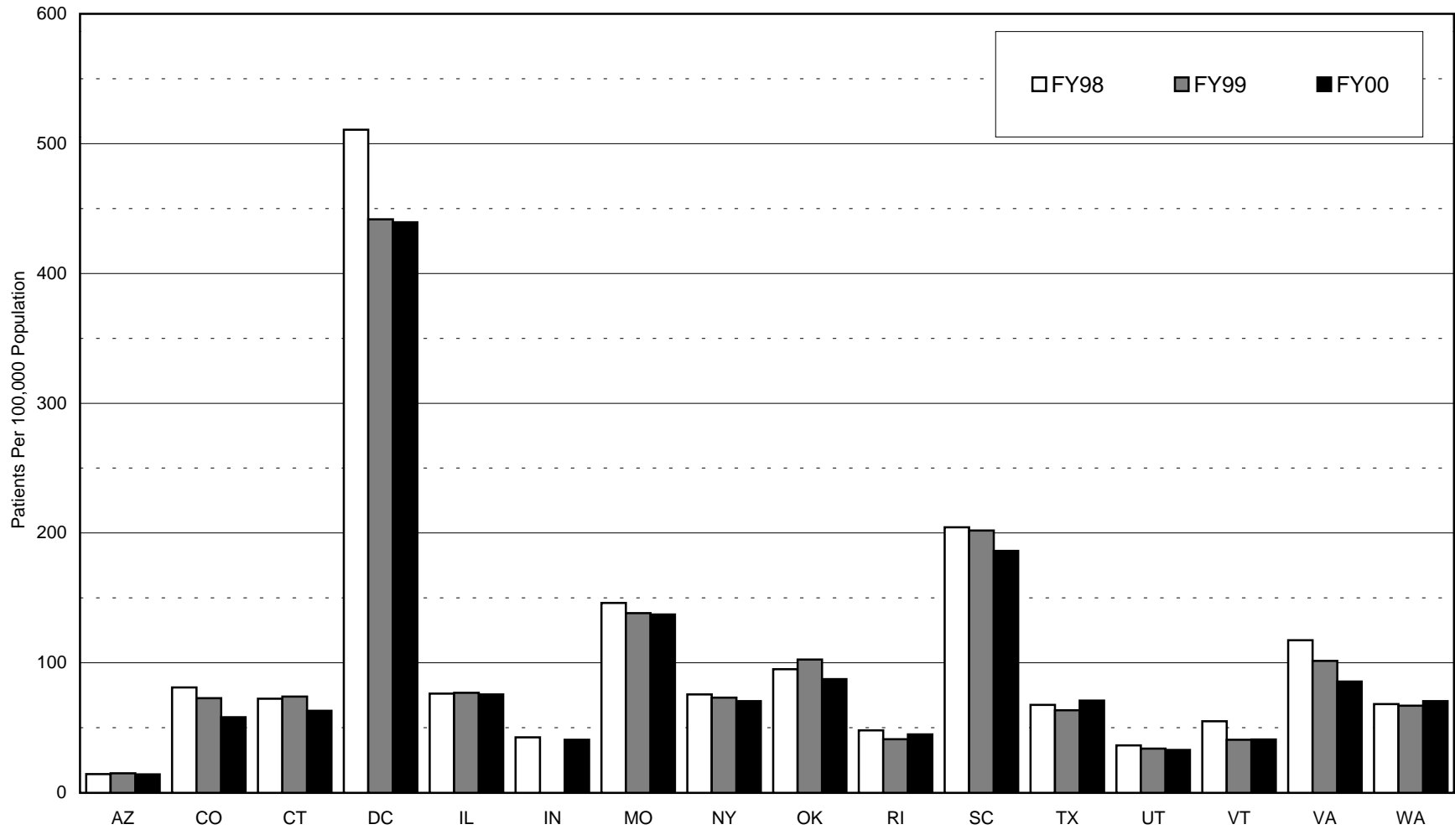
**PENETRATION/UTILIZATION RATES
COMMUNITY-BASED PROGRAMS
Rate Per 100,000 Population: FY1999**

	Total	Age		Gender		Race	
		Under 18	Over 18	Male	Female	White	Nonwhite
Overall							
Median	1,660	1,684	1,729	1,636	1,594	1,168	2,600
Minimum	790	677	795	779	800	463	1,362
Maximum	3,051	4,540	2,583	2,960	3,139	3,021	6,444
State							
Arizona	1,904	1,998	1,869	2,164	1,650	1,330	6,444
Colorado	1,709	2,258	1,515	1,585	1,832	1,322	6,369
Connecticut	1,075	-	1,418	1,103	1,049	810	3,022
DC	1,651	1,200	1,762	1,762	1,553	463	2,272
Illinois	1,033	928	1,071	1,011	1,055	850	1,823
Indiana	1,033	1,182	1,227	1,335	1,120	1,014	3,227
Missouri	1,004	677	1,119	1,010	1,000	920	1,581
New York	-	-	-	-	-	-	-
Oklahoma	1,057	719	1,177	996	1,115	994	1,362
Rhode Island	2,358	2,900	2,186	-	-	-	-
South Carolina	2,214	3,015	1,947	2,161	2,263	1,906	2,899
Texas	790	777	795	779	800	519	2,253
Utah	1,965	1,925	1,985	1,949	1,980	1,951	2,235
Vermont	3,051	4,540	2,583	2,960	3,139	3,021	4,852
Virginia	1,660	1,442	1,729	1,686	1,635	1,458	2,302
Washington	1,838	2,134	1,735	1,736	1,939	1,648	3,366

**PENETRATION/UTILIZATION RATES
COMMUNITY-BASED PROGRAMS
Rate Per 100,000 Population: FY2000**

	Total	Age		Gender		Race	
		Under 18	Over 18	Male	Female	White	Nonwhite
Overall							
Median	1,721	1,627	1,638	1,619	1,585	1,317	3,060
Minimum	852	408	905	831	873	446	1,186
Maximum	3,282	5,135	2,706	3,208	3,353	3,246	6,539
State							
Arizona	1,810	1,867	1,787	2,039	1,585	1,353	5,403
Colorado	1,721	2,372	1,489	1,603	1,837	1,317	6,539
Connecticut	931	-	1,232	897	963	635	3,060
DC	1,757	1,309	1,858	1,848	1,678	446	2,468
Illinois	1,206	1,194	1,208	1,192	1,219	954	2,281
Indiana	1,270	1,306	1,258	1,394	1,153	1,048	3,353
Missouri	1,066	729	1,180	1,066	1,065	958	1,797
New York	-	-	-	-	-	-	-
Oklahoma	959	408	1,155	891	1,024	913	1,186
Rhode Island	2,465	2,678	2,385	2,494	2,439	2,156	6,048
South Carolina	2,251	3,154	1,956	2,444	2,071	1,929	2,970
Texas	852	720	905	831	873	560	2,421
Utah	1,952	2,062	1,808	1,945	1,958	1,813	4,646
Vermont	3,282	5,135	2,706	3,208	3,353	3,246	5,488
Virginia	1,587	1,387	1,638	1,619	1,557	1,436	2,063
Washington	1,916	2,199	1,812	1,817	2,014	1,725	3,411

Penetration/Utilization Rates State Psychiatric Hospitals FY 1998, FY 1999, FY 2000



**PENETRATION/UTILIZATION RATES
STATE PSYCHIATRIC HOSPITALS
Rate Per 100,000 Population: FY1998**

	Total	Age		Gender		Race	
		Under 18	Over 18	Male	Female	White	Nonwhite
Overall							
Median	74	28	90	101	49	52	163
Minimum	14	3	18	23	6	9	55
Maximum	511	142	603	673	368	190	675
State							
Arizona	14	4	18	23	6	9	55
Colorado	81	56	90	111	52	62	308
Connecticut	72	-	95	98	48	49	246
DC	511	142	603	673	368	190	675
Illinois	76	10	100	105	49	49	195
Indiana	43	16	52	61	25	38	87
Missouri	146	44	182	191	105	123	303
New York	76	43	87	104	49	51	158
Oklahoma	95	25	120	123	68	87	134
Rhode Island	48	-	63	61	36	41	128
South Carolina	204	89	243	252	160	166	290
Texas	68	31	83	79	57	45	190
Utah	36	18	46	48	25	34	82
Vermont	55	3	72	77	34	54	97
Virginia	117	48	140	149	87	102	168
Washington	68	7	90	93	44	63	109

**PENETRATION/UTILIZATION RATES
STATE PSYCHIATRIC HOSPITALS
Rate Per 100,000 Population: FY1999**

	Total	Age		Gender		Race	
		Under 18	Over 18	Male	Female	White	Nonwhite
Overall							
Median	73	33	88	100	50	50	179
Minimum	15	3	19	24	6	9	59
Maximum	442	169	509	582	319	169	584
State							
Arizona	15	5	19	24	6	9	63
Colorado	73	54	80	97	48	56	273
Connecticut	74	-	98	100	50	50	251
DC	442	169	509	582	319	169	584
Illinois	77	10	101	104	51	49	196
Indiana	-	-	-	-	-	-	-
Missouri	138	42	172	183	97	113	314
New York	73	42	83	102	47	47	156
Oklahoma	102	26	130	135	71	92	153
Rhode Island	41	-	54	56	28	37	88
South Carolina	202	93	238	244	163	167	279
Texas	63	33	75	75	52	42	180
Utah	34	20	41	42	26	33	59
Vermont	41	3	52	58	24	38	179
Virginia	102	44	120	127	78	89	143
Washington	67	8	88	93	41	62	104

**PENETRATION/UTILIZATION RATES
STATE PSYCHIATRIC HOSPITALS
Rate Per 100,000 Population: FY2000**

	Total	Age		Gender		Race	
		Under 18	Over 18	Male	Female	White	Nonwhite
Overall							
Median	71	34	85	90	46	46	161
Minimum	14	2	18	23	6	9	57
Maximum	439	194	494	560	334	156	596
State							
Arizona	14	3	18	23	6	9	57
Colorado	58	56	59	69	47	45	213
Connecticut	63	-	85	84	44	42	217
DC	439	194	494	560	334	151	596
Illinois	76	11	99	102	50	49	189
Indiana	41	15	50	58	25	36	86
Missouri	137	47	168	184	93	108	337
New York	71	43	79	99	44	44	154
Oklahoma	87	31	108	111	65	82	116
Rhode Island	45	-	59	58	33	43	63
South Carolina	186	103	213	223	152	156	254
Texas	71	36	85	83	59	47	201
Utah	33	17	41	41	25	31	72
Vermont	41	2	53	60	22	39	168
Virginia	86	39	100	107	65	74	123
Washington	71	9	92	97	45	65	114

State-by-State Specifications

A. Community-Based Service Data

Arizona: Figures represent counts of people who receive community-based service from a Regional Behavioral Health Authority (RBHA). Duplicates are included for individuals served by more than one RBHA during the year.

Colorado: Figures represent unduplicated counts of people served by state funded community mental health centers and clinics. Figures are unduplicated using a constructed unique person identifier that is based on a name fragment (3 letters), date of birth, and gender.

Connecticut: Figures represent unduplicated counts across enrollments in mental health community programs. This number, however, does not include people who might have been seen by crisis teams only. Between 1999 and 2000, Connecticut implemented two new clinical information systems and reclassified some of the programs. These changes make comparison of FY 2000 and later data to the earlier information questionable.

District of Columbia: Figures represent unduplicated counts of people served by community mental health centers. Figures are unduplicated on the basis of a unique person identifier.

Illinois: Figures represent an unduplicated count of the number of people who received grant-in-aid funded services. People who received services funded exclusively by Medicaid are not included in this count. It is estimated that the reported client counts represent an 11% undercount of the total number of people served by state funded programs. Figures for FY1998 have not been reported.

Indiana: Figures represent an unduplicated count of the number of people enrolled in the Hoosier Insurance Plan (HAP) who were served by community mental health centers. People who received community mental health services funded through other means are not included.

Missouri: Figures represent an unduplicated count of comprehensive psychiatric services consumers served in community programs. Unduplicated counts are based on a statewide unique person identifier. Figures for FY1998 have not been reported.

New York: Statistical methods for producing unduplicated counts of the number of people served in the community during the year are under review. Figures are not available for FY1998-2000.

Oklahoma: Figures include all individuals served by either state operated or contracted community mental health centers in Oklahoma. Figures are unduplicated using a constructed unique person identifier that is based on first and last initials, date of birth, and gender.

Rhode Island: Figures include all individuals served by community mental health centers in Rhode Island. These figures include duplication for individuals who were served by more than one community mental health center during the year. Duplication, however, is believed to be rare. Figures for FY1998 have not been reported; gender and race breakouts are not available for FY1999.

South Carolina: Figures represent an unduplicated count of all people served by 17 state operated community mental health centers. Unduplication is based on a statewide unique person identifier.

Texas: Figures represent an unduplicated count of Texas psychiatric outpatients. Unduplication is based on a statewide unique person identifier. Figures include individuals served by the Medicaid managed care pilot program, NorthSTAR. Consumers in this program may not meet the Texas mental health priority population definition. Figures for FY1998 have not been reported.

Utah: Figures represent unduplicated counts of people served by state funded community mental health centers. Figures for FY1998 have not been reported.

Virginia: Figures include all individuals served by community services boards. Duplicates are included for individuals served by more than one community service board during the year.

Vermont: Figures represent unduplicated counts of all people who received mental health services through community mental health centers in Vermont. Unduplication of person counts across regions of the state is based on Probabilistic Population Estimation.

Washington: Figures represent an unduplicated count of all persons who were eligible for and received service from publicly funded mental health outpatient programs. Unduplication is based on a statewide unique person identifier that is based on name, date of birth, social security number, and gender.

B. State Hospital Data

Arizona: Figures represent unduplicated counts of individuals served by State Hospitals. Individuals who receive inpatient services under contract with a Regional Behavioral Health Authority but are not served by a state hospital are not included.

Colorado: Figures represent unduplicated counts of individuals served by State Hospitals. State Hospitals account for all inpatient services provided by the state mental health authority.

Connecticut: Figures represent unduplicated counts of individuals served by State Hospitals, excluding people with a substance abuse diagnosis. Inpatient services are also provided under contract with local general hospitals in Eastern Connecticut and in local general hospitals for General Assistance recipients through managed care contract. These other locations are excluded from this report.

District of Columbia: Figures represent unduplicated counts of individuals who received inpatient services provided by St. Elizabeth's Hospital. This hospital accounts for all inpatient services provided by the District mental health authority.

Illinois: Figures represent unduplicated counts of individuals who received inpatient services provided by State Hospitals. Individuals who received inpatient care purchased from community hospitals but did not receive state hospital services are not included in these counts.

Indiana: Figures represent unduplicated counts of individuals who received inpatient services provided by State Hospitals. State Hospital Data are not currently available for FY1999. Indiana does not provide acute inpatient care at its state hospitals. This type of care is provided through case rate reimbursement to local hospitals and community mental health centers. Acute-care patients account for the majority of state-funded inpatient days. Consequently, Indiana's reported state hospital utilization rates significantly understate the actual use of state-funded inpatient services.

Missouri: Figures represent unduplicated counts of individuals who received inpatient services provided by State Hospitals. Inpatient services are also provided under contract with other facilities. Individuals who receive inpatient services under contract with other facilities but are not served by a state hospital are not included in these counts.

New York: Figures represent unduplicated counts of individuals who received inpatient services provided by State Hospitals. State hospitals account for all inpatient services provided by the state mental health authority.

Oklahoma: Figures represent unduplicated counts of individuals who received inpatient services provided by State Hospitals. Inpatient services are also provided by state operated and private non-profit community mental health centers. Individuals who received inpatient care from community mental health centers but did not receive state hospital services are not included in these counts.

Rhode Island: Figures represent unduplicated counts of people hospitalized for psychiatric care in Rhode Island's state operated general hospital and services purchased under contract with a privately operated psychiatric hospital. Inpatient services are also purchased under contract with a privately operated psychiatric hospital. Individuals who receive inpatient services under this contract but are not served by a state hospital are not included in these counts.

South Carolina: Figures represent unduplicated counts of individuals who received inpatient services provided by State Hospitals. State hospitals account for all inpatient services provided by the mental health authority. The system is integrated which results in state facilities being a first line response for inpatient care, especially for indigent and involuntary admissions.

Texas: Figures represent unduplicated counts of individuals who received inpatient services are provided by State Hospitals. State hospitals account for all inpatient services provided by the state mental health authority.

Utah: Figures represent unduplicated counts of individuals who received inpatient services provided by State Hospitals. Inpatient services are also provided by local community mental health centers with funding from the state authority. Individuals who receive inpatient services provided by community mental health centers but are not served by a state hospital are not included in these counts.

Virginia: Figures represent unduplicated counts of individuals who received inpatient services provided by State Hospitals. State hospitals account for all inpatient services provided by the state mental health authority. Forensic patients are not included in these figures.

Vermont: Figures represent unduplicated counts of individuals who received inpatient services provided the Vermont State Hospital. This hospital accounts for all inpatient services provided by the state mental health authority.

Washington: Figures represent unduplicated counts of individuals who received inpatient services provided by State Hospitals. Inpatient services are also provided under contract with other facilities. Individuals who receive inpatient services provided under these contracts but are not served by a state hospital are not included in these counts.