

# Hurricane Andrew

Special Presentation to  
Southern Regional Conference on Mental  
Health Statistics  
Charles M. Kimber  
Florida Disaster Behavioral Health  
Coordinator

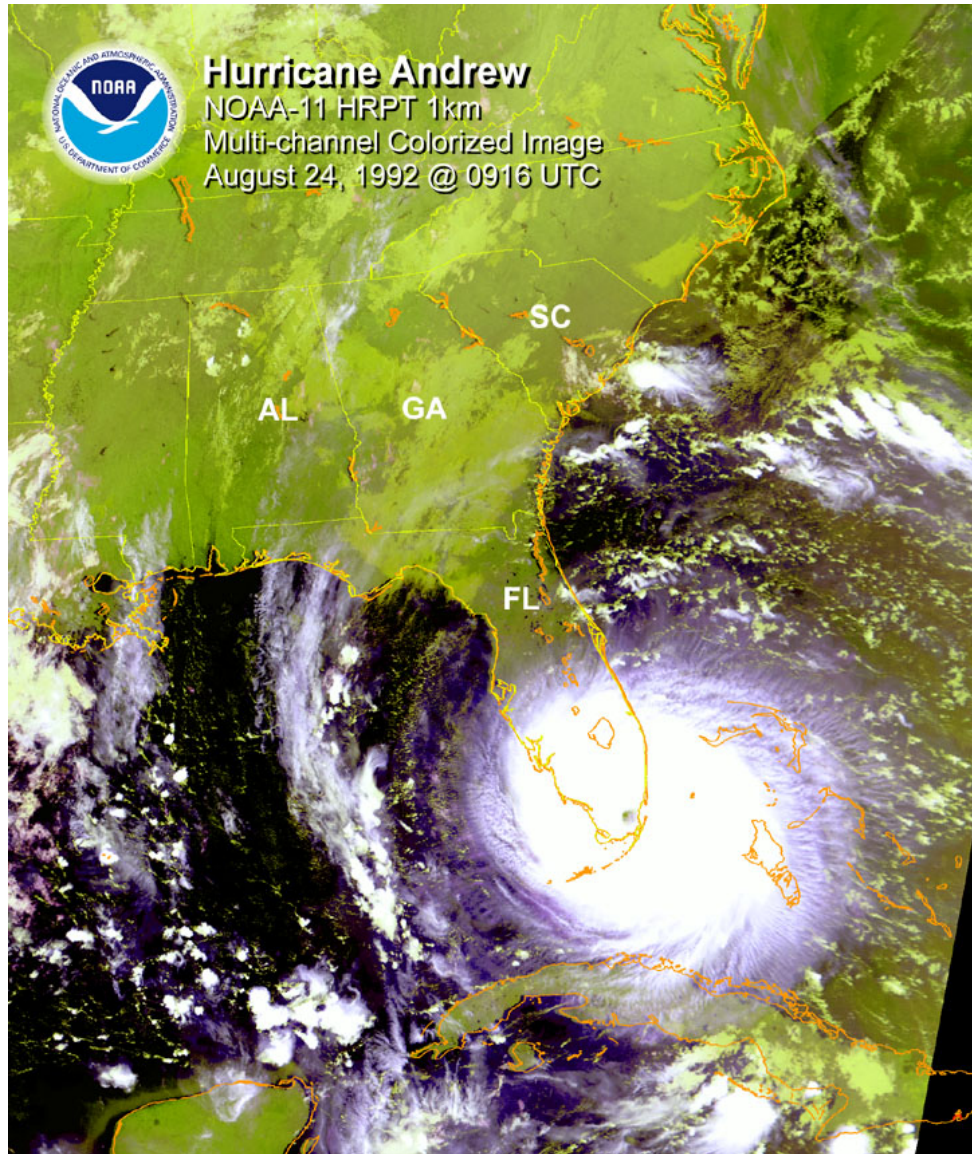
# THE STORM

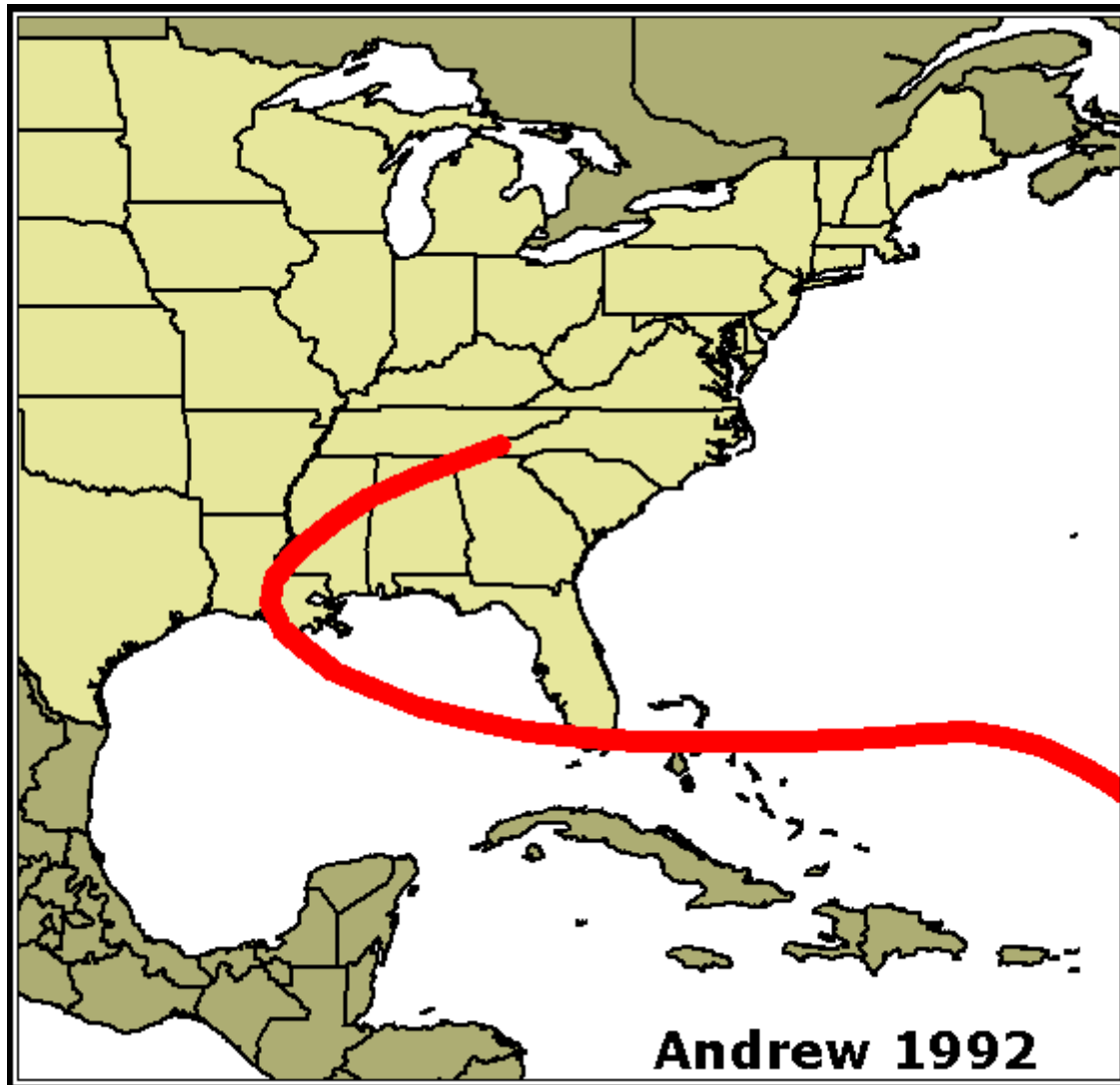


**Hurricane Andrew**  
NOAA-12 AVHRR HRPT  
Multi-spectral False Color Image  
August 23, 1992 @ 12:31 UTC



**Hurricane Andrew**  
NOAA-11 HRPT 1km  
Multi-channel Colorized Image  
August 24, 1992 @ 0916 UTC





**Andrew 1992**

# ASSESSMENT

- STORM HIT SOUTH MIAMI, LESS AFFLUENT SECTION
- (Homestead, Kendall, Florida City
- LESS POPULUS AREA avoiding the downtown and condos.

# Assessment

	Andrew	
Category	5	
Damage	\$25 billion (1992 dollars)	135,000 homes
Deaths	23	
Homeless	160,000	
Lost Jobs	86,000	











# LESSONS LEARNED

- Trauma of a severe storm is long lasting
- Response should be rapid,
- The therapeutic approaches should be sensitive to the state of individual recovery
- Disaster work is highly interdependent
- Disasters are not business as usual
- In adversity lie opportunity

# Lessons (Con'd)

- Develop a culture of preparedness and personal responsibility
- Creativity Welcome!

# TEMPLATE FOR CHANGE

- All-Hazards Behavioral Health Plan (Described in handout)
- A strong cadre of responders
- Further integration into the State's Comprehensive Emergency Plan and Emergency Operations
- Effective use of lessons learned as target for improvement
- Build disaster measures into strategic and business plans.

# TEMPLATE

- Public education on what we do
- Better care for disaster responders
- More ways to develop continuity between disasters

# DISASTER BEHAVIOR HEALTH RESPONSE

## Process Map

May 24, 2006

